



Box 1005, Wabamun, Alberta, T0E 2K0

[Web](#) [Facebook](#) [Twitter](#) [Email](#)

No. 28

Winter 2023

A New Year

by Sue Styles, WWMC Chair

Greetings,

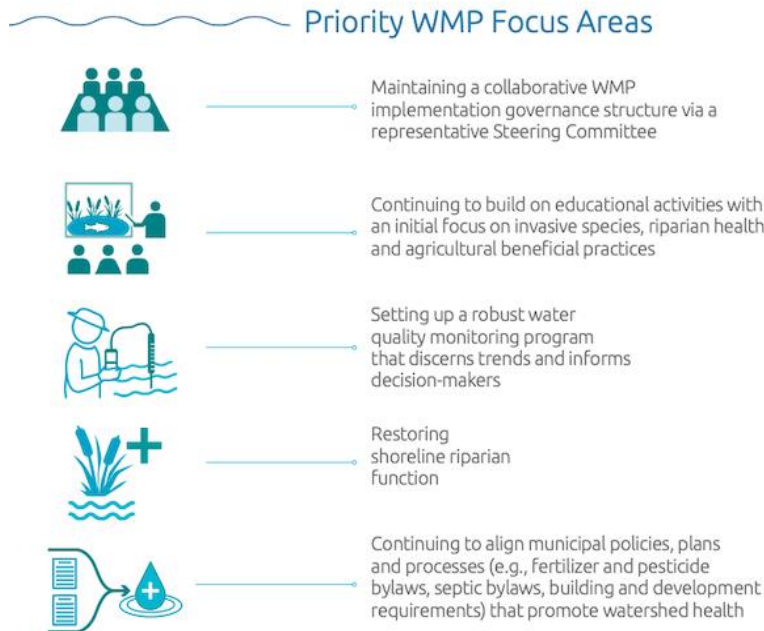
Welcome to our first newsletter of the 2023 New Year and the first newsletter since the WWMC Annual General Meeting (AGM). So, I take this moment to wish you and yours a Happy New Year from the WWMC!

The 2021-2022 WWMC Annual Report, which was presented at the AGM Oct 19/2022, is available on the [WWMC website \(PDF\)](#). The annual report provides a review of the WWMC's many activities and milestones of the past year. You are invited to read the report and we welcome your questions and/or comments—info@wwmc.ca.

In this 2023 New Year, the WWMC remains focused on its mission:

To guide the development, management, and stewardship of Wabamun Lake through collaborative watershed planning, research, and public education.

As shown in the Annual Report and the following newsletter articles, we remain focused on our mission by staying grounded in the priority focus areas of the Wabamun Watershed Management Plan (2020) (see page 5 Figure below). We look forward to an exceptional year of advancing protection of Wabamun Lake and its watershed!



...2

2022-2023 Board of Directors

by Sue Styles

It is an honor to introduce the 2022-2023 WWMC Board of Directors and Representatives. Thanks to each of you for your interest and commitment to protecting Wabamun Lake and its watershed.

Executive Committee

Sue Styles—Chair
Neil Fleming—Past Chair
David Ball—Treasurer
Stan Franklin—Secretary
Don Meredith—Communications

Directors

Randy Heil
Michelle Foster
Denny Thomas
Doug Thomas

Government Representatives

Arin McFarlane-Dyer—Alberta
Environment and Protected Areas
Megan Thompson—Lac Ste Anne Métis
Community Association
Natalie Birnie—Parkland County Council

Long-serving Board members, Kelly Aldridge and Stan Kobylko, have decided to retire from the Board of Directors as of the 2022 AGM. Kelly was Chair of the Board from 2010 to 2014. Stan represented lakeside camps on the Board and provided strong support for WWMC initiatives. The WWMC thanks Kelly and Stan for their service, support and guidance.

In this Newsletter, we are pleased to highlight the Government Representatives to the WWMC Board of Directors and extend our immense appreciation for their commitment and contributions to the WWMC Board decisions and their supportive work to protect the health of Wabamun Lake and its watershed.

Alberta Environment and Protected Areas—Arin MacFarlane-Dyer

Arin is an Integrated Resource Planner and supports the WWMC on behalf of the Government of Alberta. She is a Professional Biologist with over 10 years of experience working on lake watershed health. Arin was appointed to represent the WWMC Board of Directors in 2017.



Lac Ste. Anne Métis Community Association—Megan Thompson

Lac Ste. Anne Métis are a contemporary rights-bearing Métis community with deep connection to the landscape we have called home for more than two centuries. Lac Ste Anne Métis Community Association (LSAMCA) is a corporate entity designed and incorporated by members of the contemporary Lac Ste Anne Métis community to represent the Métis aboriginal rights and interests of the historic and contemporary Lac Ste. Anne Métis community, a Section 35 (Constitution Act, 1982) Métis aboriginal rights-bearing (Powley) community. Today, LSAMCA members reside at locations corresponding with lands and waters our Ancestors have used and occupied over many generations. As a kinship-based community, we participate in a shared culture inclusive of our distinctive customs and traditions, including the continued exercise of our Métis harvesting rights. These activities and way of life remain core to our identity as a modern-day, Section 35 (Constitution Act, 1982) rights bearing Métis people ([Lac Ste Anne Métis Community Association](#)). Megan Thompson is a limnologist, and has worked closely with the Lac Ste Anne Métis Community Association (LSAMCA) for several years. Megan has been appointed by the LSAMCA to be their representative on the WWMC Board of Directors.



Lac Ste. Anne Métis
Community Association

Parkland County Council—Natalie Birnie

Natalie Birnie, Parkland County Councillor (Division 4), was appointed a representative to the WWMC Board of Directors in October 2022. She has been a small business entrepreneur in Parkland County for over 30 years, heading retail, manufacturing and trades businesses. From 2010 – 2020, she led the Acheson Business Association as Executive Director, guiding the establishment as a leading organization in the Edmonton region. As a member of various committees and boards, she is dedicated to helping others in the community from food banks, farming to seniors and other entrepreneurs.



Water Sampling

by Neil Fleming



(l to r) Natalie Bernie—Division 4 Councillor for Parkland County, Gord Wilson—Mayor of the Summer Village of Point Alison, and Stan Franklin—WWMC walking to a testing site in December (photos by Neil Fleming).

In addition to our four winter and four summer sampling sessions, we hope to again be participating in a separate three-day sampling event which will be co-ordinated with satellite flyovers on those days. Imagery from the satellite when compared with water samples from about 30 locations will be used to identify and predict cyanobacteria bloom occurrences on Wabamun. Under direction from the University of Alberta and pending grant funding, similar profiles are being developed for other lakes in the area with very promising results.

Besides providing a great deal of scientific data, these outings are very enjoyable and provide an opportunity to get out on the lake in a variety of weather conditions. We encourage any lake stakeholders, or anyone simply interested, to join us to share our mutual knowledge and love for the lake. In the past we have been joined by councillors from Parkland County and some of the Summer Villages, as well as members of our partner organizations. If you think this may be something you are interested in, please drop us a line at info@wwmc.ca.



Whitewood Sands Riparian/Shoreline Restoration Project Update—The 1st Winter Season

by Sue Styles



Wattle fences awaiting spring (photos by Sue Styles)

As reported in the [Fall 2022 WWMC Newsletter](#), Parkland County undertook a shoreline restoration project at Whitewood Sands (located on the north shore of Wabamun Lake). A project group did the soil bioengineering work in October 2022. "The group built the wattle fences with live dormant native balsam poplar and willow

vertical and horizontal stakes harvested earlier on this day. The wattle fences were built on a steeply eroding lakeshore bank. Using this soil bioengineering technique, it is expected the vertical and horizontal stakes will leaf out in the spring and develop a strong root system to stabilize the slope and help to minimize soil erosion at this site". In addition, dense live staking (using the balsam poplar and willow material) of the lakeshore bank on the other side of the access road was also completed. WWMC indicated we would share updates on this project at various intervals. These photos were taken January 16, 2023 (1st winter season). The wattle fences and live staking are patiently waiting for spring...and so are we.



Please Pick-up After You and Your Dog

The WWMC have been hearing reports of excessive amounts of dog feces being left on the lake this winter. In addition to feces, people have been leaving other garbage including drink containers, fireworks debris and the remains of fires on the ice.



Fire ash also adds to the nutrient loading of the lake.

It shouldn't need to be said that debris left on the ice in the winter ends up in the water in the spring. If you wouldn't leave it on the beach in the summer, please don't leave it on the lake in the winter.

Besides being high in phosphorous content (the primary driver of algae blooms), excrement left on the ice and shore adds to the amount of fecal coliform in lake water. The presence of fecal coliforms in spring water samples collected by Alberta Health Services will lead to beach closures.



If you happen to encounter some garbage of any kind, please find a way to pick it up and dispose of it properly. While it may not be your dog, it is your lake.

Donors

The WWMC gratefully thanks the following people who have donated to the WWMC to continue our work protecting the health of Wabamun Lake: Kelly and Mary Aldridge, Margaret Bakker, Todd Baldwin, Rob Cowley, Sandy Drummond, Carol and Keith Epton, Neil Fleming, Colleen and David Judge, Kobylko Family, Doris Kent and John McIvor, Don Meredith, Julia and Tony Nelson, Cliff Richard, Robarts Family, Bill and Kate Russell, Denise and Bernie Wade.

Corporate Members

The WWMC thanks the following businesses, governments and organizations for joining the WWMC as corporate members and helping the council achieve its goals. Go to [Get Involved](#) for more information about Corporate Membership.

Gold Members



Wabamun



Silver Members



Bronze Members

SHORESIDE INN & SUITES

5100-51 Ave
Box 300
Wabamun, AB
T0B 2K0
Phone: 780-892-4773
Cell: 780-892-7434
Fax: 780-892-4614
Website: www.shoresidesuites.com
E-mail: shoreside.servicemanager@shoreside.com



Seba Beach Heritage Society, Wabamun ATB Financial, Wabamun Hotel