

Lakescape

newsletter of the



WABAMUN WATERSHED
MANAGEMENT COUNCIL

Box 1005, Wabamun, Alberta, T0E 2K0

www.wwmc.ca

info@wwmc.ca

No. 19

Spring 2018

Ice Heave Update

On January 2, 2018, the lake ice on Wabamun expanded laterally, heaving and buckling the shoreline along the north shore of the lake, from Seba Beach east to just west of the Village of Wabamun. There was some shoreline upheaval along the south shore, but the greatest damage was along the northwest shore. The damage to the shoreline was extensive in many areas including damage to buildings and structures. According to the Alberta Geological Survey, similar phenomena occurred on several lakes in central Alberta from January 1 to 2.

Go to www.wwmc.ca for more information about the ice heave, including how it occurred, the WWMC drone (UAV) flyover report, and the steps that must be taken before repairing the damage (courtesy of Alberta Environment and Parks, and Parkland County).



Shoreline Restoration Workshop

On Friday and Saturday, **May 11 and 12**, Seba Beach will host a Shoreline Restoration Workshop. The first day of the workshop will be held at the Seba Beach Seniors Centre, from 9:00 a.m. to 4:30 p.m. The second day will occur on a shoreline property from 9:00 a.m. to 5:00 p.m. David Polster of Polster Environmental Services Ltd. will present the workshop. He is an experienced and highly regarded restoration specialist. Although based in British Columbia, he has done projects and workshops in Alberta and across the country. Polster emphasizes working with nature using local native vegetation to ensure a long-lasting repair that respects the health of the lake. For more information on his background and the projects he's done, go to <http://polsterenvironmental.com>.

The first day of the workshop will be an all-day classroom session where he will explain the theory and practicality of restoration processes. The second day will be a field trip to a disturbed shoreline area where you will learn, hands-on, how to do the repairs. The workshop will cost \$45/person or \$55/couple (i.e., joint owners of a property) to cover the cost of the comprehensive manual and lunch on the first day (you bring your own bag lunch on the second day). Even if you hire professionals to do the work you require, this workshop will help you ask the right questions.

Registration for the workshop will open during the week of April 3. An announcement will be sent via our email list, and posted on our website (www.wwmc.ca), Facebook page (www.facebook.com/groups/Wabamun/) and Twitter (www.twitter.com/WabamunWMC). If you are not yet on the WWMC email list, contact us at info@wwmc.ca.

...2

Watershed Management Planning Gets Underway!

by Petra Rowell, North Saskatchewan Watershed Alliance

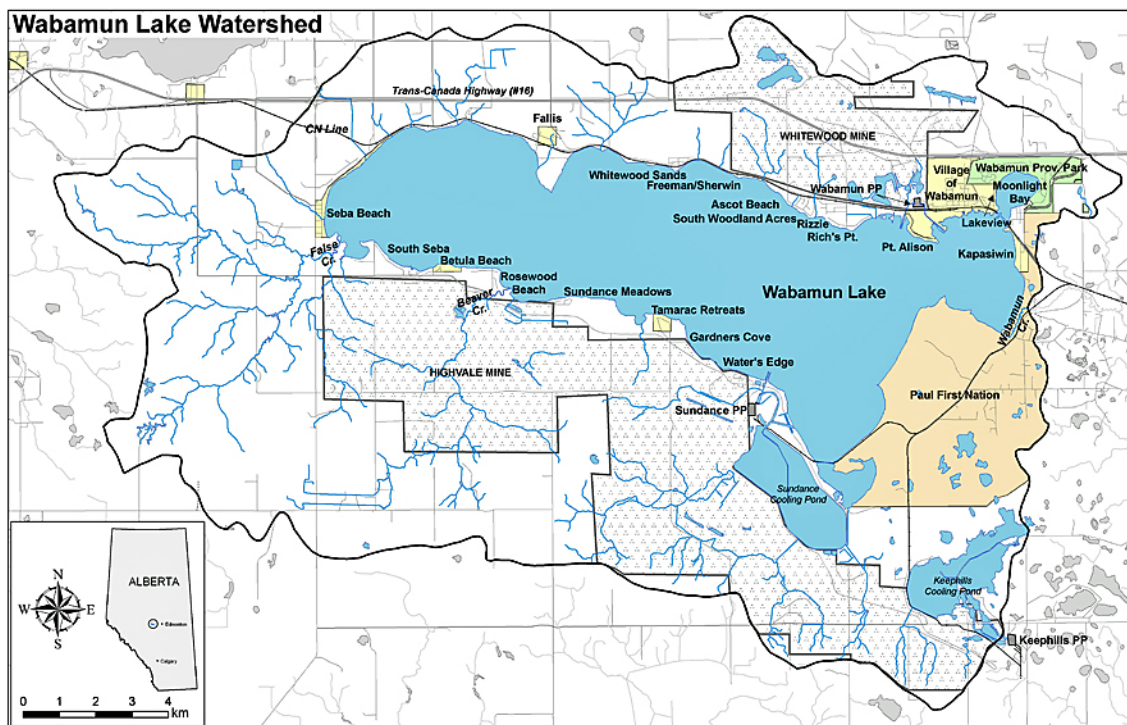
The Wabamun Lake Watershed Management Plan Steering Committee met on March 8 to kick-off work on a watershed management plan for the Wabamun Lake watershed. The committee is a collaboration of stakeholders, including governments (provincial, municipal and summer villages), industry (TransAlta), and residents and other interested communities and organizations, as represented by the Wabamun Watershed Management Council.

What is a Watershed Management Plan?

- A commitment to collaborate on watershed management for the health of the lake and its surrounding watershed (the lands that drain into the lake, see map below)
- A road map that outlines who will do what by when, where, and how

To inform the Steering Committee’s work, a Technical Committee is also being formed and will undertake a number of scientific activities to better understand what is known about Wabamun Lake and surrounding uplands, including water quality, water quantity (lake level and tributary flows), aquatic ecosystem health (e.g., shoreline health, fisheries, etc.) and land cover/land use as it affects how water flows over the landscape, and how it affects point and nonpoint pollution.

The Steering Committee is hoping to make significant progress on the watershed management plan this year (2018). However, they also want to make sure they engage as many people as they can along the way to ensure the plan addresses the issues and is well-supported by everyone who lives, works and plays in the Wabamun watershed. The Wabamun Watershed Management Council will play a big role in gathering input and communicating plan progress. So please stay tuned...



...3
...3

Septic Sense Workshop

by Don Waterman, Vice Chair

Parkland County, in association with the Alberta Onsite Wastewater Management Association (AOWMA, <http://www.aowma.com>), presented a Septic Sense workshop at Carvel on February 22. It was very well attended and lasted about three hours. The focus of the workshop was to define a septic system and the goals of sewage treatment. Details were provided on the regulations around the design, installation and maintenance of the septic system. The system must meet or exceed the requirements of the Alberta Private Sewage Systems Standard of Practice for private sewage. All systems require the proper permits from the municipality and the project needs to be inspected.

There was very little specific information about waterfront properties. During the question and answer session after the presentation, a question was asked about the impact of septic fields on or near the lakefront and their effect on the quality of the lake water. The presenter stated that most if not all the septic fields near lakes are old and do not work well, and have significant impact on contaminating lake water. Only 3% of the material that enters well working septic fields evaporates. The rest gets into ground water and eventually the lake. Removal of all septic fields in a lake watershed and having holding tanks to replace them would be of significant benefit to improving the quality of the lake water. There is a government grant available to repay 60% of the cost of holding tank installation when used to replace a septic field.

A second Septic Sense workshop will be held July 14 at the Seba Beach Pavilion at 2 p.m. Contact Parkland County for more information.

Corporate Members

The WWMC thanks the following businesses, governments and organizations for partnering with the WWMC as corporate members and helping the council achieve its goals.



**Camp Oselia Society, Dairy Queen, Falher Drugs, Seba Beach Ice Cream Stop
Summer Village of Betula Beach, Summer Village of Point Allison, Wabamun & District Lions Club**

If you own or represent a business or organization that is concerned about Wabamun Lake and would be willing to help maintain its health, become a corporate member of the WWMC for just \$100 a year (go to Get Involved at www.wwmc.ca). Corporate members will be acknowledged at WWMC functions, in each newsletter and on the website. For more information contact Neil Fleming by e-mail, fleming.neil@outlook.com or telephone, 780-953-6345.

If you are already a corporate member and would like to see your logo here and on the WWMC website, please send a digital copy to Don Meredith at wwmc@donmeredith.ca